



# Storage-Tech

The Future of Storage



## FLAT PACK CONTAINER INSTRUCTIONS AND ACCESSORIES

### Contents

01. Flat Pack Container assembly instructions
02. Locking Bar assembly instructions
03. Shelving assembly instructions

**FOR FURTHER INFORMATION CALL 519 - 861 - 8337 OR EMAIL [INFO@STORAGE-TECH.CA](mailto:INFO@STORAGE-TECH.CA)**



# FLAT PACK CONTAINER ASSEMBLY INSTRUCTIONS

For assembling 7ft., 10ft., 13ft., 16ft. and 20ft. Containers



## TOOLS & EQUIPMENT YOU'LL NEED:

- Philips screwdriver
- Flat head screwdriver
- 13mm wrench
- 19mm wrench and socket set
- Level
- Five tread stepladder (minimum)
- Work gloves (to protect your hands from sharp edges and to assist grip when lifting the metal panels)



## HARDWARE KIT:

- Handles
- Key Cylinders
- Eye Hooks
- Nut & Bolt Package

## NUT & BOLT BUNDLES:

- Quantity of Nuts and Bolts vary by the size of the container

A minimum of two people are required to assemble 7ft. & 10ft. Containers and 4-6 people for 13ft., 16ft., and 20ft. Containers. If parts need to be moved by hand, we recommend using four people to allow for one person at each corner.

## Components for 7ft., 10ft., 13ft., 16ft. and 20ft. Containers

7 ft. / 271kg		10 ft. / 351kg		13 ft. / 421kg		16 ft. / 630kg		20 ft. / 850kg	
Container Rear Panel 30kg	1 pc.	Container Rear Panel 30kg	1 pc.	Container Rear Panel 30kg	1 pc.	Container Rear Panel 30kg	1 pc.	Container Rear Panel 35kg	1 pc.
Container Side Panel 26kg	2 pcs.	Container Side Panel 40kg	2 pcs.	Container Side Panel 54kg	2 pcs.	Container Side Panel 60kg	2 pcs.	Container Side Panel 267kg	2 pcs.
Door panel 51kg	1 pc.	Door panel 51kg	1 pc.	Door panel 51kg	1 pc.	Door panel 82kg	1 pc.	Door panel 82kg	1 pc.
Door	1 pc.	Door	1 pc.	Door	1 pc.	Door	1 pc.	Door	1 pc.
Container Roof 50kg	1 pc.	Container Roof 70kg	1 pc.	Container Roof 79kg	1 pc.	Container Roof 160kg	1 pc.	Container Roof 160kg	1 pc.
Container Chassis 88kg	1 pc.	Container Chassis 120kg	1 pc.	Container Chassis 153kg	1 pc.	Container Chassis 306kg	1 pc.	Container Chassis 306kg	1 pc.

**Note:** Indicated weights are approximate and for guidance only. If the weight is critical to your use or for lifting, it's your responsibility to please check.



# FLAT PACK CONTAINER ASSEMBLY INSTRUCTIONS

For assembling 7ft., 10ft., 13ft., 16ft. and 20ft. Containers

## NOTE: 20ft. CONTAINERS

Assembly of 20ft. Containers the same as all other containers in the flat pack range. However due to the larger size and weight of the components (the floor and roof) we recommend mechanical assistance from typically a crane or forklift for moving component parts and fitment of the roof. Parts others than the floor and roof can still be moved by hand if necessary, but typically require 4-6 people to do so.

## ASSEMBLY TIPS

**1.1** Try to get the pack delivered as close as possible to the erection area. To ensure the base is level, it's best to use each of the four corners and once level support the base in the middle to help prevent any sag over time.

**1.2** Ideally concrete bases or asphalt are the best option for long-term installations although paving slabs can provide the simplest solutions. We also recommend gravel or crushed stone.

**1.3** The erection process is made much easier when the base is level at the start.

**1.4** Don't assemble in windy conditions as this can be dangerous and make sure you have enough people available to move and erect the panels safely.

## MAINTENANCE

**1.5** Check foundations periodically to make sure that the unit remains level. Signs that the unit might have moved usually result in the door becoming difficult to open or close, or the unit rocking on the pads.

**1.6** The only moving parts are the lock and hinges which need a light oiling on a periodic basis.

**1.7** Check the roof from time to time and remove any debris, especially leaves, to ensure the gutters work correctly.

## OTHER INFORMATION

**1.8** If you keep all the packaging material, it can be used to re-pack the unit at a later date. Otherwise please recycle it.

**1.9** The unit is not designed to be stacked.

**1.10** The unit once correctly assembled, can be lifted and moved using the lifting hooks. Please check the security of all fixings each time before lifting.

## DELIVERY AND UNPACKING

**1.11** The store will arrive in flat pack form. If the crane can offload and level up in the final erection position, this will save you time later.



**1.12** Whether or not you need to move the parts to a different location, the container now needs to be unpacked. Unbolt the four metal retaining plates using a 19mm socket wrench and also unscrew the lifting eyes. The retaining plates are not required for assembly, so dispose or keep if you intend to re-pack the unit at a later date.



**1.13** Now lift off the top roof panel and all other items. Lay them out neatly so you can easily locate the parts later. Please do not attempt this in windy or gusty conditions as individual parts could be blown away, endangering you and others.



**1.14** If you need to move the parts to a new location, do so now. Begin with the base which needs to be level (check with the level), before starting the erection process.



# FLAT PACK CONTAINER ASSEMBLY INSTRUCTIONS

For assembling 7ft., 10ft., 13ft., 16ft. and 20ft. Containers

## ASSEMBLY OF THE CONTAINER



**1.15** Position the door panel on the end required.

**1.16** Using a 13mm socket now fit 4x M8 bolts (Single Door) or 2x M8 bolts (Double Door) and washers to secure the door panel to the base.

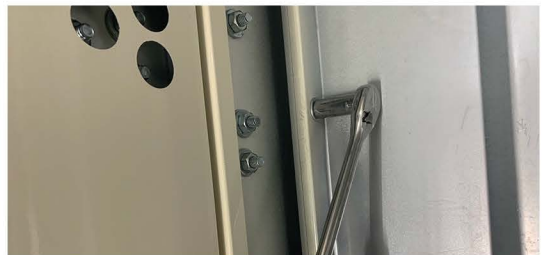


**1.17** Fit locks into the door panel, slide the barrels into the door and turn. Once the lock turns, this shows it is located correctly and the screw can be inserted and tightened using your Phillips screwdriver.



**1.18** Now unlock the door and prop it open using the wooden packaging that you removed earlier. If you are erecting on an exposed site, you may need others to hold the door panel to prevent it falling and causing damage.

**1.19** Now lift either wall panel (if the site is restricted we recommend you start with the wall nearest any obstruction) to the side of the chassis base. The tongue on the side panel will slide into a groove on the door panel. Once aligned correctly, fix the wall panel to the door panel using an M8 bolt with washer and 3x nut each side.



**1.20** Now fix the side panel to the chassis using M8 and M10 bolts and washers.

**1.21** Repeat steps 1.19 - 1.20 for the other side panel.

**1.22** Now fit the end panel (panel opposite the door). Rest on the bottom of the chassis rail at 45 degrees and raise up, aligning the tongue and groove joints as you lift. Do not force this as it could damage the tongue, making it difficult to align correctly later. Secure to chassis and side panels as per other panels.

### NOTE:



If you are having trouble fitting the barrel locks through the opening. Remove the key cover plates with a Phillips screw driver then insert the key cylinder and replace the cover plate.



# FLAT PACK CONTAINER ASSEMBLY INSTRUCTIONS

For assembling 7ft., 10ft., 13ft., 16ft. and 20ft. Containers

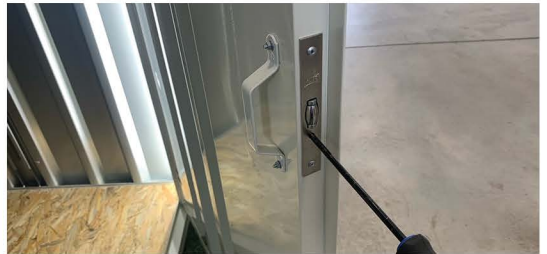
## ASSEMBLY OF THE CONTAINER



**1.23** Next fit the roof panel, making sure the ID plate is at the door end. You may need additional helpers at this point. Firstly close and lock the door, and assuming site conditions allow, lift the roof onto the door panel and slide up. Once the roof panel is in the correct place it will slot over all four walls. Please keep fingers clear at this point as it can lock down unexpectedly. If necessary the panel can be slid up from the side but due to steeper angles this requires more effort. For 6m stores - see note on page 3.



**1.26** Fit the handles onto the inside and outside of the door using the screws provided.



**1.27** Finally adjust the ball catch using the Philips screwdriver so that the door closes easily but remains in position when unlocked. Clockwise brings the ball out and anti-clockwise pushes it in again.

**1.24** Now fit the M8 bolts, nuts and two washers to secure the roof to the respective wall panels.



**1.25** Using your stepladder, access the top of the roof to screw in the 4x lifting eyes.



**YOUR UNIT IS COMPLETE!**



# Storage-Tech



## LOCKING BAR ASSEMBLY INSTRUCTIONS

For assembling a 7ft., 10ft., 13ft., 16ft. and 20ft. Locking Bar

### OVERVIEW

The locking bar provides additional security, using 2 fixings attached to the container with security cup head bolts and a removable steel bar that prevents door being opened when padlocked.

### TOOLS & EQUIPMENT YOU WILL NEED

- Cordless drill
- 12mm drill bit
- 4mm or any small drill bit for pilot hole or centre punch
- Safety glasses
- Pencil or marker pen
- Leather work gloves
- Eye protection

### PARTS FOR LOCKING BAR

- 8 x 10mm coach bolts
- 8 x washers
- 8 x nuts
- 1 x padlock security plate (usually fitted to the side opposite the hinges)
- 1x locking bar security plate (usually fitted next to the hinge)



**FOR FURTHER INFORMATION CALL 519 - 861 - 8337 OR EMAIL [INFO@STORAGE-TECH.CA](mailto:INFO@STORAGE-TECH.CA)**



# LOCKING BAR ASSEMBLY INSTRUCTIONS

For assembling a 7ft., 10ft., 13ft., 16ft. and 20ft. Locking Bar

## ASSEMBLY OF THE LOCKING BAR



**3.1** For extra security its possible to fit more than one locking bar.

**3.2** The recommended position when fitting a single locking bar is above the door handle. Position the security plates 112cm from the bottom rail of the chassis to the bottom of each security plate as shown in the attached photo (although it can be fitted any height you choose, depending on expected use). The two security plates are different, one accommodates the padlock and is usually fitted the same side as the original door locks. The opposite one supports the locking bar itself (see assembled product).



**3.3** Position the security plates so that they are the correct way round as shown in the final fitted photos.

**3.4** Mark out and centre punch (or drill pilot hole) 8x holes (4 for left and 4 right).

**3.5** Drill 8x 12mm holes.



**3.6** Fit security plates using coach bolts provided (nuts on inside).



**3.7** Mounting plate nearest container padlock.



**3.8** Slide the locking bar into the door hinge end and fit padlock.

The locking bar can be used when you want extra peace of mind, please make sure you store it where it will not be a trip hazard. The bar is maintenance free, we recommend that you occasionally spray the padlock with a silicone based spray.



# Storage-Tech



## SHELVING SYSTEM ASSEMBLY INSTRUCTIONS

For assembling 7ft., 10ft., 13ft., 16ft.  
and 20ft. Container Shelves

### OVERVIEW

The Storage-Tech shelving system is extremely quick and easy to construct. It is made up of a minimum of two shelf uprights that slot quickly and easily into the wall of the flat pack container using no fixings. The shelf arms (also no fixings required) have a 15kg load capacity each. The shelf upright itself has a capacity of 30kgs, this means a maximum of two shelf arms can be used on each shelf upright. Therefore when using two shelf uprights each shelf has a load capacity of 30kg, with each additional shelf upright and shelf arm the load capacity increases by 15kg up to a maximum of 60kgs per shelf for both the 1370mm and 1850mm shelf sizes.

The exact contents of your container will depend on which shelf configuration and option you have chosen but the assembly method will be the same.

Before starting make sure that the flat pack container has been correctly assembled and all bolts have been used as indicated in the instruction manual.

First of all unwrap all items and lay them out so that you can plan where each shelf will be located and the height that you need to use the shelves.

### ASSEMBLY OF THE SHELVING



**3.1** Insert the top of the shelf upright into the top rail of the flat pack container, these should be positioned so that the shelf will be stable and secure when loaded. Not too close to the end and wide enough apart that the shelf will be balanced. Make sure that the shelf upright is now located behind the bottom rail of the container.



**3.2** See above to show which end is the top.





# SHELVING SYSTEM ASSEMBLY INSTRUCTIONS

For assembling 7ft., 10ft., 13ft., 16ft. and 20ft. Container Shelving

## ASSEMBLY OF THE SHELVING



**3.3** Twist the shelf arm at around 45 degrees to enable it to slot into the shelf upright. Now twist the shelf arm, sometimes a small tap is required to locate the shelf arm into the final position. If you need to remove or reposition the shelf arm at anytime, twist the shelf arm in the opposite position and lift upwards.



**3.4** Final position of shelf arm, when correctly fitted.



**3.6** Finally you can now position the shelf onto the shelf arms (minimum of two).



**3.5** Now repeat the process for all other shelf uprights and shelf arms.



**3.7** Before adding any weight check that the shelf is sitting level and is secure.